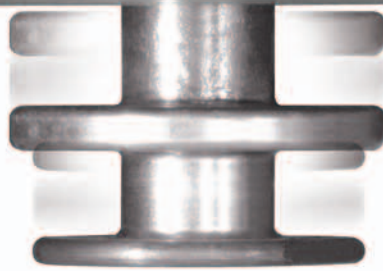




THE ROAD TO INDEPENDENCE

Permolock is a device for securing power wheelchairs in place inside a vehicle, which allows users to actually drive while sitting in their wheelchairs. Permolock is designed specifically for use with Permobil's C400 and C500 power wheelchair bases and consists of two elements: a locking device mounted to the wheelchair chassis and a locking plate mounted to the vehicle. These features ensure the wheelchair does not break free during a collision or because of some other sudden movement. Both elements are easily controlled with the simple touch of a button.

PERMOLOCK



RETRACTABLE LOCKING PIN

Activated by Control Button and drops into place to secure the wheelchair to the base. Retracts when not in use.



CONTROL BUTTON

Located on the armrest and used to drop the locking pin into place, so it can properly dock to the locking plate.



LOCKING PLATE

Easy-to-install docking station that holds the chair firmly and securely in position.



VEHICLE CONTROL BUTTON

Located on the dash, it uses three lights—red, amber and green—to indicate if the chair is locked into place. Simply press and hold to unlock the wheelchair.



EMERGENCY RELEASE

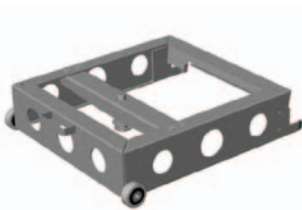
Locking mechanism can be opened manually with the emergency handle on the front edge of the locking plate.



MANUAL RELEASE

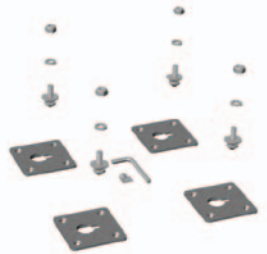
Wheelchair can be released manually in the event of vehicle power failure.

ACCESSORIES



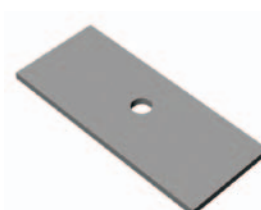
CHAIR BASE

Permits use of original car seat in Permolock.



QUICK ANCHORING SET

Used to anchor the Permolock in a vehicle and allows easy transfer of the lock between different positions in the vehicle.



INSTALLATION SPACER

Used for installing Permolock on a sloping surface.



THE POWER OF MOBILITY

Permobil Inc.
300 Duke Drive
Lebanon, Tennessee 37090
800.736.0925
www.permobil.com